

Industrial SD Card

IDC3B



The IDC3B industrial-grade SD card implements MLC NAND Flash and sports a 3K P/E cycle rating for great durability and high capacity. For excellent data integrity, the IDC3B supports BCH ECC (Error Correction) and Wear Leveling technologies. The IDC3B is highly reliable and compatible as well as power efficient, and is ideally suited for applications such as automation, surveillance, healthcare, POS, in-vehicle and handheld devices.

Features

- Compliant with SD 2.0/3.0 specifications
- 3K P/E Cycles – improved endurance and reliability
- Wide temperature support: -40°C to 85°C
- Low power consumption: 0.72W
- BCH ECC (error correction) technology
- Supports Wear Leveling and S.M.A.R.T. Monitor
- Suitable for automation, surveillance, healthcare, POS, in-vehicle, and handheld devices

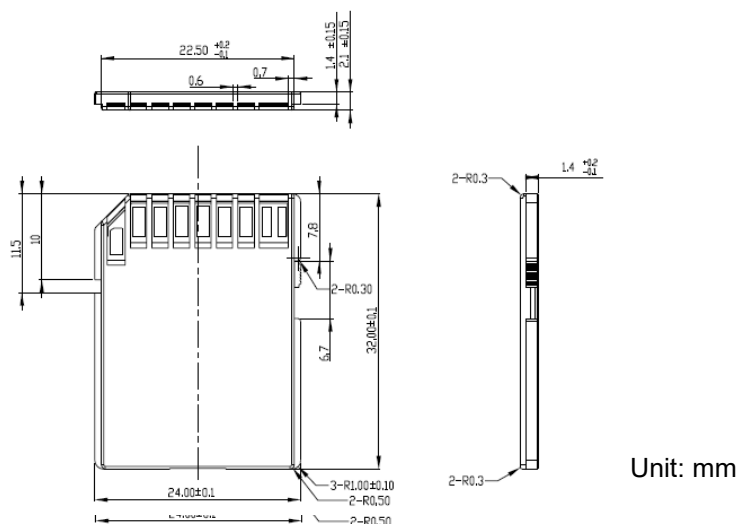
Ordering Information

| Operating Temp. | 8GB | 16GB | 32GB | 64GB | 128GB | 256GB |
|-----------------|-------------|-------------|-------------|-------------|-------------|-------------|
| -25°C to 85°C | IDC3B-008GM | IDC3B-016GM | IDC3B-032GM | IDC3B-064GM | IDC3B-128GM | IDC3B-256GM |
| -40°C to 85°C | IDC3B-008GT | IDC3B-016GT | IDC3B-032GT | IDC3B-064GT | IDC3B-128GT | IDC3B-256GT |

Specifications

| Model | IDC3B |
|------------------------------------|---|
| Form Factor | SD |
| Capacity | 8GB – 256GB |
| Interface | SD 2.0/3.0 |
| Flash Type | MLC |
| Dimensions (L x W x H) | 32 x 24 x 2.1mm |
| Sequential Read (Max.) | 95MB/s |
| Sequential Write (Max.) | 69MB/s |
| Speed Class | UHS Speed : Class 3 |
| Operating Temperature (Standard) | -25°C to 85°C |
| Operating Temperature (Industrial) | -40°C to 85°C |
| Operating Voltage | 3.6V |
| Power Consumption (Max) | 0.72W |
| Shock Resistance | 1500G/0.5ms, Half Sine Wave |
| Operating Humidity | 5%-95% RH, non-condensing |
| Vibration Resistance | 20G (20-2000Hz) |
| Technologies | BCH ECC, Wear Leveling, Garbage Collection, Bad Block Management, S.M.A.R.T. Monitor |

Diagram



Contact Us

HQ (Taiwan):

T: +886-8228-0886

E: adata@adata.com

US:

T: +1-714-332-8708

E: IASales_us@adata.com

EU:

T: +49-899-0405-296

E: IASales_eu@adata.com

China

T: +86-21-6233-1010

E: IASales_cn@adata.com

JP:

T: +81-3-5807-0011

E: IASales_jp@adata.com

APAC/MEA:

E: IASales_apacmea@adata.com